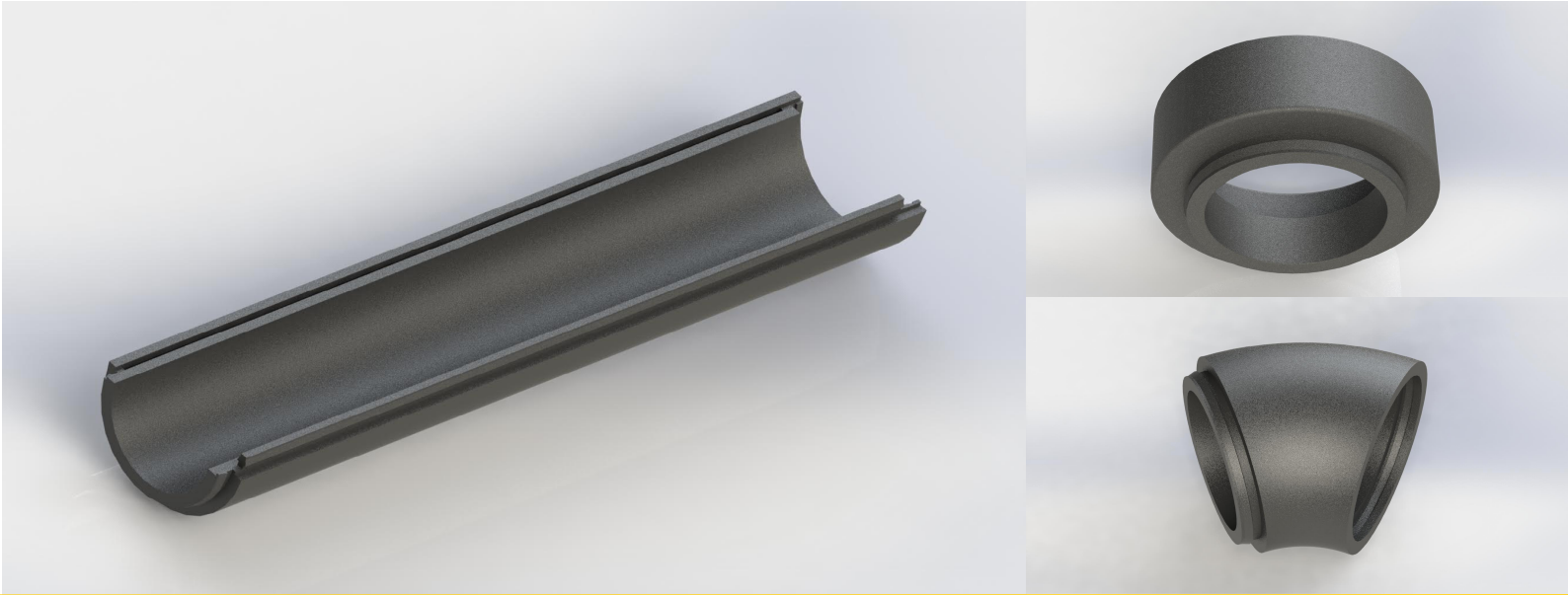


VZ_EPP_01, VZ_EPP_02, FU_EPP_03



EPP system - elbow, tube, flange

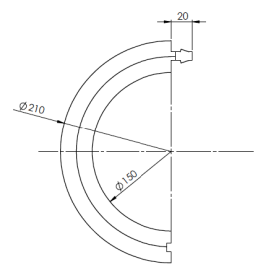
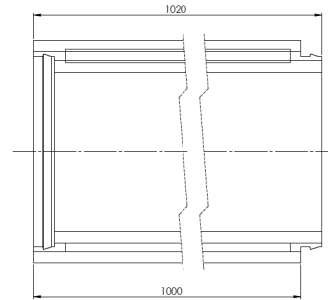
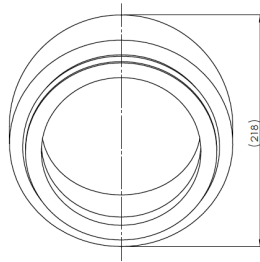
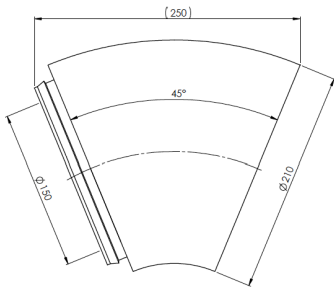
Usage

EPP is a moisture-proof duct system with an outstanding insulating efficiency thanks to 30 mm wall thickness. It complies with provisions of EnEV 2009 to insulate ventilation air ducts. EPP system is used for air supply and air extract ducting between Futura ventilation unit or Ambienta W water heater and outdoor environment.

Installation: The latch must be installed horizontally. When ducts are coupled and X-piece is used, the system is self-supporting up to 4m. We recommend using a hot wire cutter to shorten the ducts. Installation must comply with all local building code requirements.

Order codes: elbow VZ_EPP_01, tube VZ_EPP_02, flange FU_EPP_03

Dimensions



Technical details

Duct length: 1000 mm

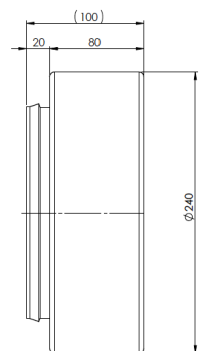
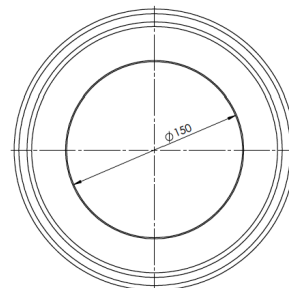
Internal/external diameter: 150/210 mm

Max. recommended airflow: 375 m³/h

DIN 4102-1 specification: self-supporting, class B2

Tightness: airtight, up to 200 Pa

Attenuation: elbow (45°) LP 1,3 dB/piece, duct LP 3 dB/m



Any changes resulting from technical development are reserved.

Do you need additional information?
Call us: +420 775 587 595.

E-mail: info@jablotronLT.com | Web: JABLOTRONLT.COM